

CAVERNE

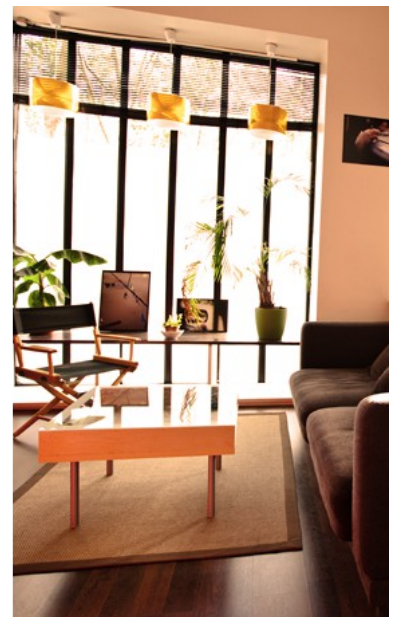
Mailing address :
97, boulevard Arago – 75014 Paris - France
Studio access :
56, boulevard Saint Jacques – 75014 Paris - France

Phone : +33 (0)9 80 94 96 49
E-mail : contact@cavernestudio.com
Web : www.cavernestudio.com

TECHNICAL SHEET

THE STUDIO

Caverne Studio | 2021
Paris



Located in Denfert-Rochereau, in the 14th arrondissement of Paris, Caverne Studio welcomes you in a warm and friendly environment devoted to all your music and broadcast projects, from recording to mixing. A skilful technical team (Nicolas Sacco and Jean Ledoux) is at your disposal to help you completing all your projects successfully.

Caverne Studio was designed and built by Olivier Bolling (Al.So, Audio & Tech) and Gerard Billot after the plans of acoustician Michel Deluc (Atelier 33).

With a floor area of 80 m², the studio comprises one control rooms and two recording room (a big one and a smaller one with variable acoustics). Studio Caverne is equipped with high-end audio gear so you have optimal conditions for any kind of projects, for both music (pre-production, recording, mix...) and TV broadcasting (sync music, dubbing, voice-over, recording and mixing for TV broadcast, advertising, multimedia...).

A cosy living-room and a nice lounge area (TV, Internet, Wi-Fi, Kitchenette...) are also at your disposal.

EQUIPEMENTS

DESK

SSL Matrix

MULTITRACKS / DAW

Protools Station Ultimate HD2
Protools HDX 32 i/o
2x Avid HD interfaces i/o
Mutec MC3 External Clock
Lavry DA 11
Lavry AD 10
Sony APR24 24 tracks tape machine analog 2"

MONITORS & HEADPHONES

Adam S2A
Adam Sub8
Avantone MixCubes
Genelec 8040
Eve Audio SC407
Yamaha HS5
Hear HearBack System
Klinger Favre Audio Studio 15 Klinger Favre amp
Beyer Dynamic DT770 x5
Beyer Dynamic DT150
Sony 7509

MICROS

AEA R44CNE
Akg C414 Xls x2
Akg C451 E (+pad -20 dB)
AudioTechnica AE2500
Beyer Dynamic M88
Beyer Dynamic M201 x2
Beyer Dynamic M160 x2
Blue BlueBall Mic
Coles 4038 x3
Electro-Voice RE20 x2
Flea 47 fet
Griffon FuzzyPhone (germanium mic) x2
Josephson C42MP x2
Josephson C700 x2
Melodium 42B
Melodium 76A
Neumann TLM 103
Neumann U87
Oktava MDS200 (Russian 1977)
Philips EL6031
Placid Audio Copperphone
Royer R121
Royer R122 x2
Sennheiser 421 x4
Schoeps Mk22
Shure "Green Bullet" 520DX
Shure Sm7 x2
Shure Sm57 x5
Toa Micro DM-78 de Megaphone
Wasaphone Mic MKII
Wasaphone SignalMan
Yamaha Subkick

MIC PRE / EQ / DI

Ampex 351
Api 512c x4
Api 550b
Al.So Mp5 (5x2)
Al.So Sommateur (8in, 2out)
Chandler Ltd1 x2
Chandler TG2 (stereo)
D.W. Fearn DW2 (stereo)
Findip MA-103 x2 (germanium transistor)
Neve 1073 (stereo)
Neve 4081 (Mic Preamp x4)
Neve EQ 8108 (stereo)
Neve EQ 8803 (stereo)
Realios A9031
Realistic MicPre 42-2108 Vintage 70s
UBK Clariphonic
Avenson IsoDI
Fearn Pdb DI x2
Fearn LP1 Line Pad (stereo) x2
Little Labs Instrument Cable Extender
Little Labs RedEye DI/ReAmp x2
Radial Jdi Duplex DI (Stereo)
Radial SGI Studio Guitar Interface
Universal Audio 2-610

DYNAMIC

Api 2500 (stereo)
Bss DPR402 (stereo)
Chandler Ltd2 x2
Dbx 160 x2
Dbx 165
Distressor
Neve 2254R (stereo)
Spl Transient Designer x4
Universal Audio 1176

FX

Demeter Spring Reverb (Stereo, Short)
Demeter Spring Reverb (Stereo, Long)
Dynacord CLS222
Dynacord VRS23
Klemt Echolette NG51S
Lexicon PCM60
Lexicon PCM70
Little Labs Vog
Realistic MicPre 42-2108 Vintage 70s
Roland Dimension D
Roland SBF- 325 Flanger
Sherman Filterbank V2
TC Electronic M5000
TC Electronic Reverb 4000
Vesta Fire RV2 Spring
Thermionic Culture - Culture Culture (Anniversary edition)
Yamaha D1500 Digital x2
Yamaha E1010 Analog Delay
Yamaha Rev7

BACKLINE

INSTRUMENTS

Boss SP-505 Groove Sampling Workstation
Danelectro Guitare Baryton
DiGeorgio 1974 Guitare Classique
Eminent Solina String Ensemble
Farfisa mini-compact
Fender Rhodes 73, Mark I Stage Piano
Fender Rhodes Bass
Harmonium Guide Chant Kasriel
Korg CX-3
Korg Electribe ER1
Multivoix MX-880 Duosonic
Piano Hohner Liliput
Piano Michelsonne droit (25 touches)
Piano Michelsonne à queue (25 touches)
Roland JX-3P
Roland Juno6
Roland SH2000
Steinway piano droit modèle K 1911 (entièrement restauré)
Wurlitzer 200A
Yamaha S90

DRUMS

Baravento Brazilian Snare (Batucada)

Yamaha Oak Custom X
-Kick 22"x20"
-Snare 14"x7"
-Tom Hi 14"x8"
-Tom Mid 16"x15"
-Rack Tom 18"x16"

Ludwig Blue Oyster 1964
-Kick 20"
-Snare 14"
-Tom Hi 12"
-Tom Low 16"

Mapex Saturn Pro Subsonic Blue Sparkle (sur demande)
-Kick 24"
-Snare 14x7, 5"
-Toms Hi 14"
-Toms Med 16"
-Toms Low 18"

TOYS

Angel Glockenspiel
Orgue Bontempi
Flûte chinoise
Korg Monotron
Mégaphone
Mini accordéon
Percussions
Stylophone
Stylophone Beatbox

GUITAR AMPS

Fender Twin Pro Reverb 1970
Orange 1972 OR120 (cab)
Orange 1972 4x12 (HP)
Orange Micro Crush
Laboga 4x12 Classic A Vintage 30 Cabinet
Marshall JMP MKII (cab)
Marshall 1960A 4x12 (HP)
Marshall JCM800 Lead Series (cab)
Marshall JCM800 4x12 (HP)
Mesa Engineering Dual Rectifier Solo Head
The Valve 2/50 (cab)
The Valve 2x12 (HP)
Two Notes Torpedo Reload
Vox AC30 1969 (combo 2x12)

BASS AMPS

Ampeg SVT BlueLine (amp)
Ampeg V9 9x10 (cab)
Peavy Basic 112 (combo)
Peavy Bass Mark IV series (amp)
Custom Body 2x18 (cab)

STOMPBOXES

Boss PH3 Phase Shifter
Black Star HT Dual Distortion
DanElectro FabTOne
Dunlop Cry Baby Wah
Ebow
Effector13 Truly Beautiful Disaster
Electro-Harmonix 2880
Electro-Harmonix Bass Micro Synthesizer
Electro-Harmonix Flanger Hoax
Electro-Harmonix Sovtek Russian Big Muff
Electro-Harmonix MemoryMan
Electro-Harmonix Q-Tron
Electro-Harmonix White Finger
Eventide ModFactor
Heil Sound Talk Box
Mutron III
MXR M117R Flanger
ProCo Rat Deucetone
Tech 21 SansAmp Classic
Tech 21 SansAmp GT2
Zvex FuzzFactory Original
Zvex Mammoth